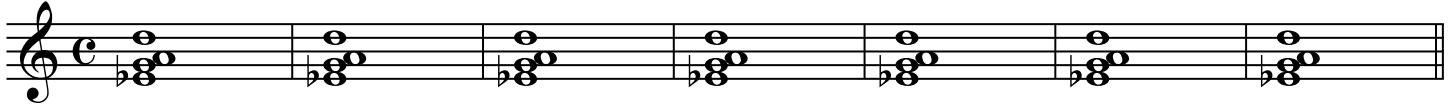


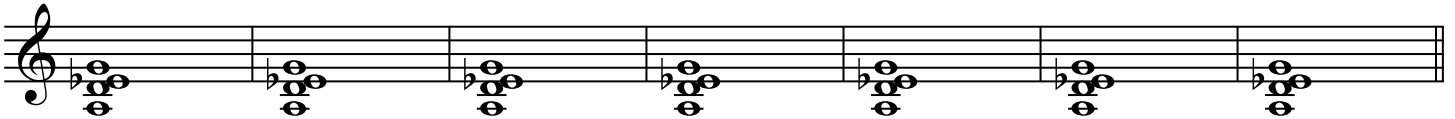
Magic Voicings

Dan Haerle

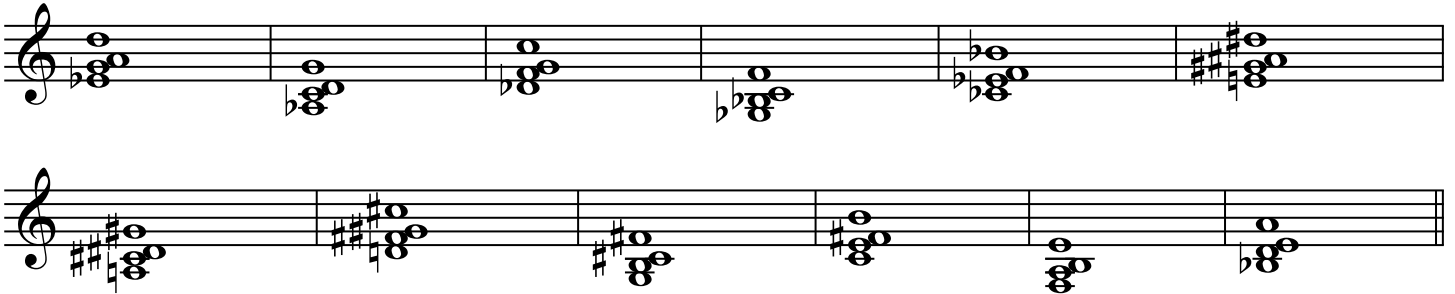
1. F13 B7^{#9} Cmi69 EbM7#11 Am7b5 Gaeolian Dphrygian



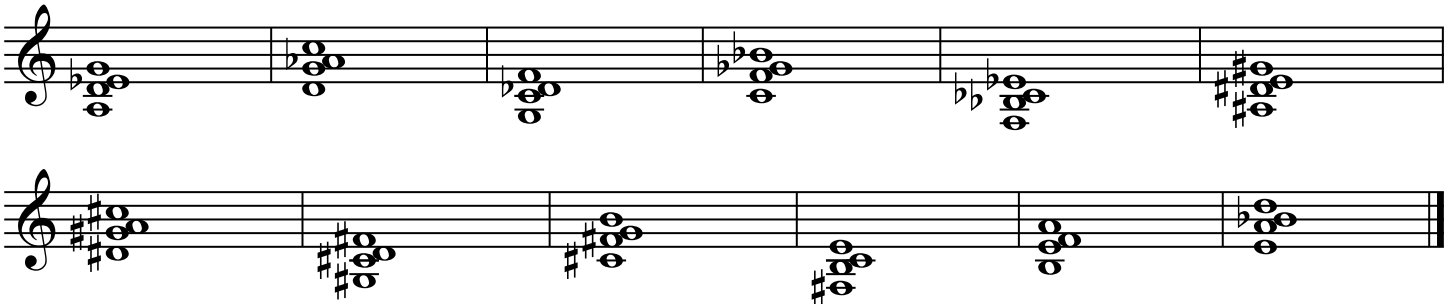
2. F13 B7^{#9} Cmi69 EbM7#11 Am7b5 Gaeolian Dphrygian



Voicing 1. in all 12 keys



Voicing 2. in all 12 keys



Voicing 1. and 2. are inversions of each other. Select a chord root and play them in all 12 keys.

Observe the interval structure of the voicings: Voicing 1. has a major 3rd, a whole step and a perfect 4th. Voicing 2. has a perfect 4th, a half step and a major 3rd.

Also, notice on which chord tone the voicing is built. For example, for a dominant 13th, voicing 1. is built on the 7th but voicing 2. is built on the 3rd. For a minor7b5, voicing 1. is built on the b5 but voicing 2. is built on the root.